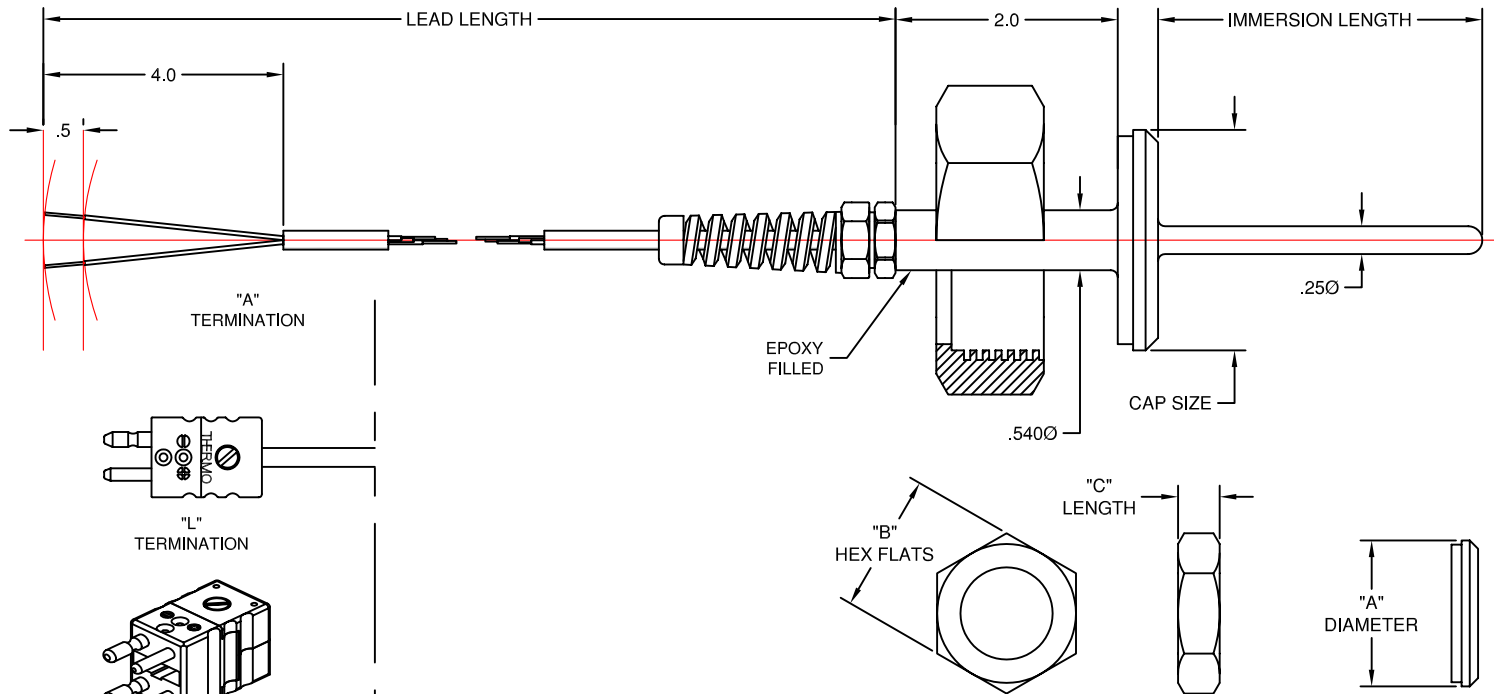


# PHARMACEUTICAL & BIOTECH THERMOCOUPLES & RTD'S



CEPCBS - 5L - BSF-1.5 - 2.5 - 36 - JJ - G - A

CODE	TERMINATION
A	BARE ENDS
L	STANDARD SIZE PLUG
C	STANDARD SIZE DUPLEX PLUG
H	MINIATURE 2 PIN PLUG
XLR	AUDIO XLR PLUG

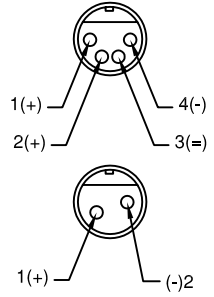
CODE	MEASURING JUNCTION
G	SINGLE GROUNDED
U	SINGLE UNGROUNDED
DG	DUPLEX GROUNDED
DU	DUPLEX UNGROUNDED

CODE		CALIBRATION
STANDARD	SPECIAL	
J	JJ	IRON (+) vs CONSTANTAN (-)
K	KK	CHROMEL (+) vs ALUMEL (-)
T	TT	COPPER (+) vs CONSTANTAN (-)
E	EE	CHROMEL (+) vs CONSTANTAN (-)

CODE	LEAD LENGTH (IN INCHES)

CODE	IMMERSION LENGTH (IN INCHES)

CODE	PROCESS CONNECTION			
	SIZE	"A" DIAMETER	"B" HEX FLATS	"C" LENGTH
BSF-1	1"	1.313"	1.813"	.906"
BSF-1.5	1.5"	1.844"	2.406"	.969"
BSF-2	2"	2.375"	3"	1.063"
BSF-2.5	2.5"	2.906"	3.594"	1.188"
BSF-3	3"	3.438"	4.188"	1.281"



WIRING DIAGRAM FOR "XLR" TERMINATION  
Mates with ITT Cannon® XLR-2-11C Receptacle for Single or XLR-4-11C for Duplex

### SPECIFICATIONS

- Material: 316/316L Stainless Steel
- Finish: #4, Ra of 32 µin Max.
- Cap Compliance: 3-A Sanitary Standard
- Temperature Range: -58 to +500° F.
- Strain Relief Cord Grip: Nylon
- Lead Wire:
  - Conductor Size: 20 Gauge Stranded
  - Conductor Material: Matching TC Alloy
  - Insulation & Jacket Material: Teflon(FEP)
- Pin Connectors
  - Body Material: Glass Filled Thermoplastic
  - Pin Material: Matching TC Alloy
  - Polarized Pins
  - Spring Loaded Inserts
  - Maximum Temperature Limit: 390°F (200°C)
- XLR Connectors
  - Shell Material: Aluminum Alloy
  - Contact Material: Copper Alloy
  - Type: Audio, keyed
  - Maximum Temperature Limit: 257°F (125°C)

**THERMO ELECTRIC**  
TEMPERATURE MEASUREMENT DESIGNER'S GUIDE  
WWW.THERMO-ELECTRIC-DIRECT.COM

## SECTION CEPC

### BEVEL SEAT THERMOCOUPLES with TEFLON(FEP) LEAD WIRE SINGLE & DUPLEX CONSTRUCTION

The information contained hereon shall be considered the sole property of Thermo Electric Company, Inc. The recipient thereof agrees not to disclose or reproduce said information to parties outside the recipient's organization without the written permission of Thermo Electric.  
Doc. No.: TE-CO010109-CEPC-160